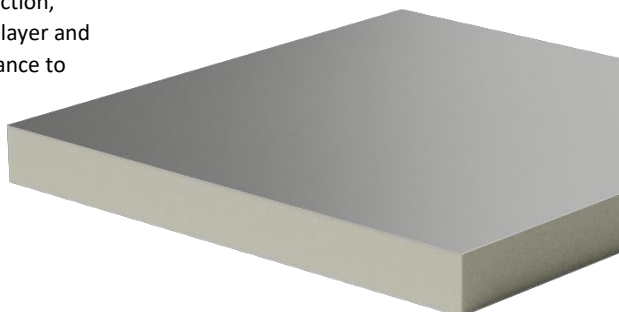


STEEL sandwich panel

Composition: STEEL - PUR - STEEL

Steel sandwich panels are the most durable solution for construction, joinery and air conditioning buildings. Thanks to the steel outer layer and the XPS or PUR insulating core, the product provides high resistance to damage and corrosion.



Sizes:

3000x1250 mm

Top layer - STEEL:

galvanized steel DX51D, galvanized coated steel S220GD (RAL pattern)
or stainless steel 1.4301 (2B finish) sheet*,
thickness: 0,5 mm.

*Other steel-alloy types on request.

Inner layer - PUR:

rigid PUR foam,
density: 40/50 [kg/m³] (EN 1602),
thermal conductivity (λ): 0,022 [W/mK] (EN 12667),
water absorption: < 3% (EN 1609),
fire rating: E (EN 13501-1).

Technical specification:

<u>Thickness</u> ¹	[mm]	20	45
<u>PUR density</u>	[kg/m ³]	40	50
<u>U Value</u> ²	[W/m ² K]	0,93	0,46
<u>Sound insulation R_w</u> ^{2,3}	[dB]	29	30
<u>Weight</u> ²	[kg/m ²]	8,8	10,4

¹ Tolerance: $\pm 1,0$ mm;

² Forecast value, determined by calculation method, based on average physico-mechanical properties of sandwich panel elements;

³ Tolerance: ± 3 dB.



Other sizes and thicknesses available on request. Other data regarding the product are available in the LB THERM Panel Using Sheet and in the General Terms and Conditions of Sales. Because of variety usage of our products, the company is not liable for physico-chemical parameters and properties in conditions different than standard, as well as interference in their original structure (painting, lacquering, coating by other materials etc.). This TDS is based on information that is believed to be reliable, but may be subject to change as new information become available. Modification and copying the contents of this document unless specifically authorized by LB THERM Sp. z o.o. are strictly prohibited.